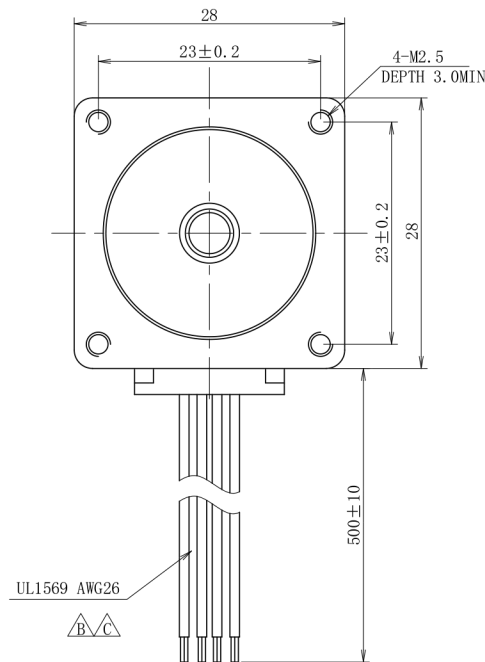
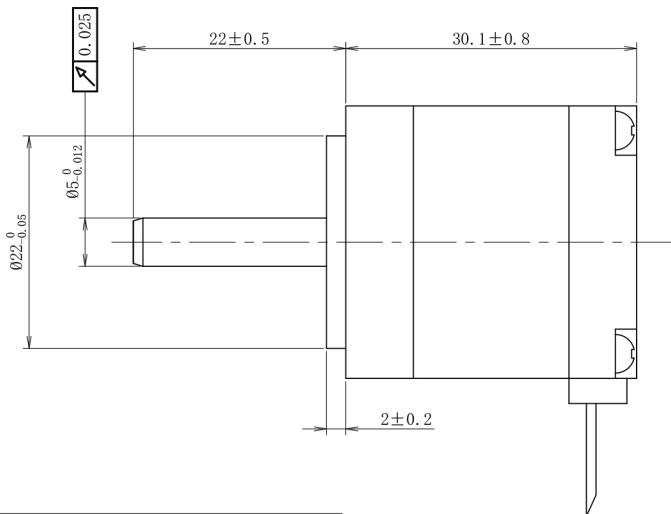
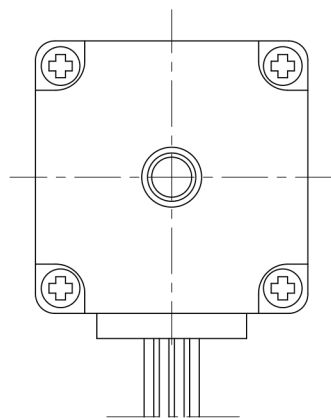
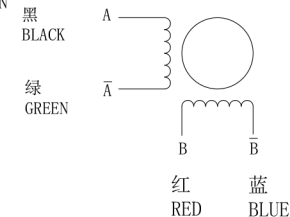


符合RoHS指令要求  
CONFORM TO RoHS INSTRUCTIONS



接线图/WIRING DIAGRAM



电器特性参数/ELECTRICAL PARAMETER

步 进 角/STEP ANGEL	1.8° ±5%
相 数 /NO. OF PHASES	2
额定电压/RATED VOLTAGE	2.7 V
额定电流/RATED CURRENT	1.0 A
电 阻 /RESISTANCE	2.7 ohm±10% AT 25° C
电 感 /INDUCTANCE	2.1mH±20% AT 1kHz, 1Vrms
保持力矩/HOLDING TORQUE	0.06N.m(8.46oz.in)以上/MIN. 注/(NOTE)1
运行力矩 (AT --PPS)	--- 以上/MIN.
RUNNING TORQUE(AT --PPS)	(---V. DC, --A/相 (PHASE), --相励磁/EX)
绝缘耐压/DIELECTRIC STRENGTH	500V A.C 1分钟/MINUTE
绝缘电阻/INSULATION RESISTANCE	100 MΩ 以上/MIN.
绝缘等级/INSULATION CLASS	CLASS B
温度上升/TEMPERATURE RISE	80K MAX. 注/(NOTE)2
转子惯量/ROTOR INERTIA	9 g.cm <sup>2</sup> (0.05oz.in <sup>2</sup> )
重 量 /WEIGHT	约/APPROX. 100克/g(3.53oz)
允许轴向负载/ALLOWABLE THRUST LOAD	12N
允许径向负载/ALLOWABLE RADIAL LOAD	50N (轴端/ON THE SHAFT END)
运行环境温度/OPERATE AMBIENT TEMP.	-20° C----+50° C
运行环境湿度/OPERATION AMBIENT HUM.	15%----90%
寿 命 /LIFE	5000小时/HOURS 注/(NOTE)3

备注/NOTE):

1. 额定电流, 两相同时通电/AT RATED CURRENT, TWO PHASE ON.
2. 热阻法: 电机安装在84\*84\*15的铝板上, 电机线圈两端通额定电压, 0PPS /MEASURED BY RESISTANCE METHOD. MOUNT WITH ALUMINUM HEAT SINK 84\*84\*15 AT TWO WINDING BE EXCITED BY RATED VOLTAGE, 0PPS, 2PHASE ON.
3. 寿命测试条件: 整步, 运行速度为最大自启动频率, 轴承的表面温度不超过70° C LIFE TEST CONDITION: 2PHASE EXCITING, FULL STEP, AT MAX. STARTING PULSE, BEARING TEMPERATURE SHOULD BE 70° C MAX.

励磁顺序(2相励磁)

---

EXCITING SEQUENCE(2EX)

STEP	A	B	$\bar{A}$	$\bar{B}$
1	+	+	-	-
2	-	+	+	-
3	-	-	+	+
4	+	-	-	+


C

CC

CUSTOMER P/N: SS1101A10A

型号/MODEL	
----------	--

28A006

CONFIRMED/ACCEPTED BY CUSTOMER (客户确认/接受)								型号/MODEL		
COMPANY CHOP&SIGNATURE (盖章&签名)		C	2015-07-27	ECN-2015-0038	引线变更	闫怀旭	28A006			
		B	2015-07-23	ECN-2015-0036	引线变更	闫怀旭				
		A	2014-04-12	-----	初版	JICM				
一般公差 TOLERANCE ±0.3/±3°		版本 REV.	年 月 日 DATE	变更番号 ECO NO.	变 更 内 容 REVISIONS	设计 BY	备 注 NOTE		REV.	C
制 图/DRAWN		Ruitech/2016-07-27		比例 SCALE  单位 UNIT	1:1	品 名  TITLE	步进电机规格书 STEPPING MOTOR SPECIFICATION		三视图 THIRD ANGLE PROJECTION 	
设 计/DESIGNED		Ruitech/2016-07-27								
审 核/CHECKED										
承 认/APPROVED										
							页 SHEET		1/1	