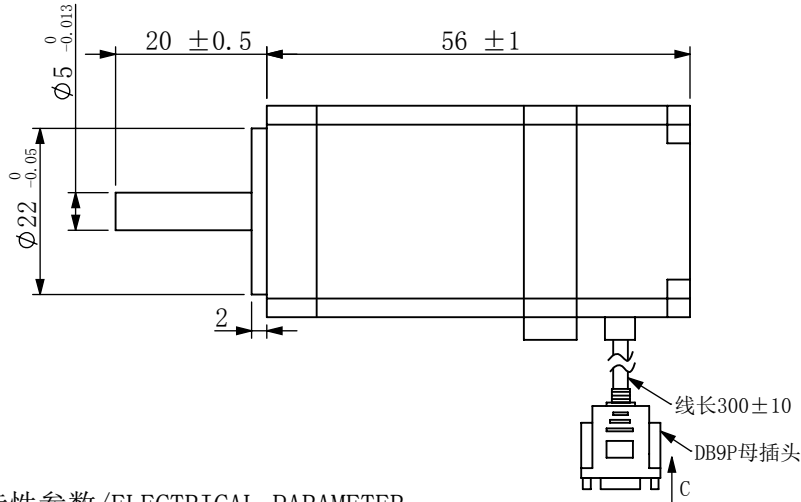


符合RoHS指令要求  
CONFORM TO RoHS INSTRUCTIONS

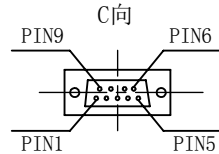
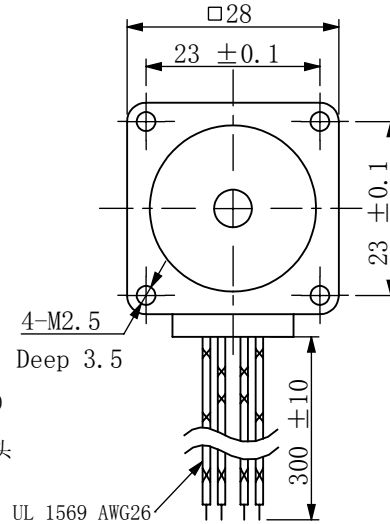


### 电机特性参数/ELECTRICAL PARAMETER

步距角/STEP ANGLE	1.8° ± 5%
相数/NO. OF PHASES	2
额定电压/RATED VOLTAGE	5.625V
额定电流/RATED CURRENT	0.75A
电阻/RESISTANCE	7.5ohm ± 10% AT 25°C
电感/INDUCTANCE	4.5mH ± 20% AT 1kHz, 1Vrms
保持力矩/HOLDING TORQUE	80mN.m
运行力矩/(AT —PPS) RUNNING TORQUE (AT —PPS)	——以上/MIN (——V.DC, ——A/相(PHASE), ——相励磁/EX)
绝缘耐压/DIELECTRIC STRENGTH	500V A.C 1分钟/MINUTE
绝缘电阻/INSULATION RESISTANCE	100MΩ 以上/MIN.
绝缘等级/INSULATION CLASS	CLASS B
温度上升/TEMPERATURE RISE	80K MAX.
转子惯量/ROTOR INERTIA	12g. cm²
重量/WEIGHT	约/APPROX. 140克/g
允许轴向负载/ALLOWABLE THRUST LOAD	3N
允许径向负载/ALLOWABLE RADIAL LOAD	20N(轴端/ON THE SHAFT END)
运行环境温度/OPERATION AMBIENT TEMP.	-20°C——+50°C
运行环境湿度/OPERATION AMBIENT HUM.	15%——90%
寿命/LIFE	5000小时/HOURS

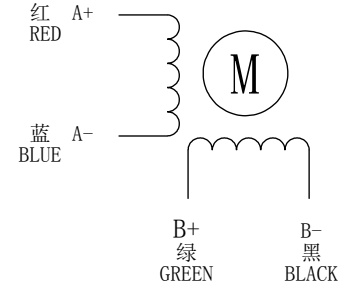
#### 备注(NOTE):

- 额定电流, 两相同时通电/AT RATED CURRENT, TWO PHASES ON.
- 热阻法: 电机安装在84\*84\*T5的铝板上, 电机线圈两端通额定电压, 0PPS /MEASURED BY RESISTANCE METHOD. MOUNT WITH ALUMINUM HEAT SINK 84\*84\*T5 AT TWO WINDING BE EXCITED BY RATED VOLTAGE, 0PPS, 2PHASE ON.
- 寿命测试条件: 整步, 运行速度为500PPS, 轴承的表面温度不超过70° C LIFE TEST CONDITION: 2PHASE EXCITING, FULL STEP, AT 500PPS. STARTING PULSE, BEARING TEMPERATURE SHOULD BE 70° C MAX.



1000线光电编码器出线定义									
序号	1	2	3	4	5	6	7	8	9
定义	EA+	EA-	NC	EB+	EB-	NC	NC	5V	GND
线色	棕	白	\	绿	黄	\	\	红	蓝

### 接线图/WIRING DIAGRAM



### 励磁顺序(2相励磁)VS. 旋转方向 EXCITING SEQUENCE(TWO PHESSES) VS. DIRECTION OF ROTATION

STEP	A+	B+	A-	B-
1	+	+	-	-
2	-	+	+	-
3	-	-	+	+
4	+	-	-	+

从安装面看为顺时针方向  
CLOCKWISE VIEW FROM MOUNTING SIDE

CONFIRMED&ACCEPTED BY CUSTOMER (客户确认&接受)									
COMPANY CHOP&SIGNATURE (盖章&签名)									
一般公差 TOLERANCE	± 0.3/± 3°	版本 REV.	年 月 日 DATE	变更番号 ECR NO.	变 更 内 容 REVISIONS	设计 BY	备注 NOTE	REV.	A
设计/DESIGNED			比例 SCALE		型 号/MODEL  28A008ED				三视图 THIRD ANGLE PROJECTION
			单位 UNIT	mm					
审核/CHECKED			深圳锐特机电技术有限公司						