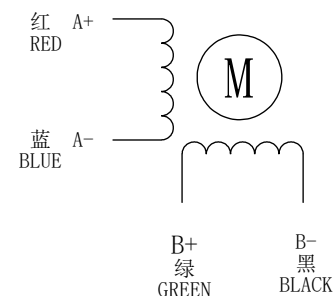
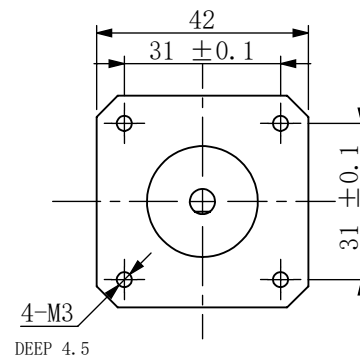
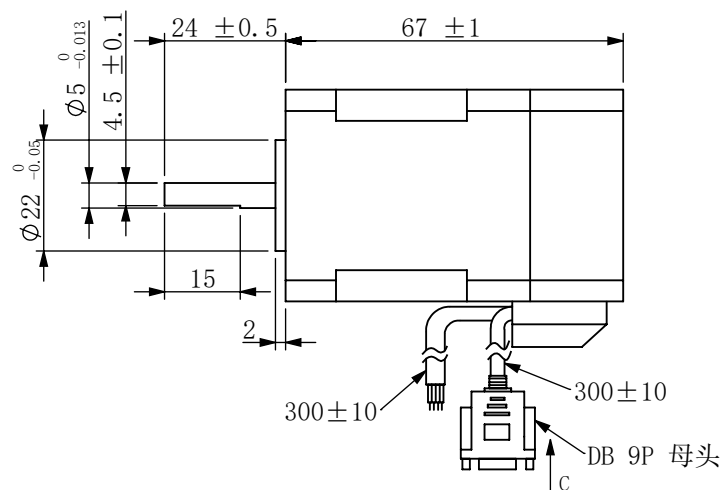


图号/DWG NO.  
42HSM47D-D0524-001



|   | STEP | A+ | B+ | A- | B- |
|---|------|----|----|----|----|
| 1 | +    | +  | -  | -  |    |
| 2 | -    | +  | +  | -  |    |
| 3 | -    | -  | +  | +  |    |
| 4 | +    | -  | -  | +  |    |

已受控

|   |   |
|---|---|
| 步 距 角/STEP ANGLE                          | 1.8° ±5%                                      |
| 相 数/NO. OF PHASES                         | 2   |
| 额定电压/RATED VOLTAGE                        | 2. 2V   |
| 额定电流/RATED CURRENT                        | 2A  |
| 电 阻/RESISTANCE                            | 1. 1ohm±10%      AT25℃                        |
| 电 感/INDUCTANCE                            | 1. 47mH±20%      AT 1kHz, 1Vrms               |
| 保持力矩/HOLDING TORQUE                       | 0. 6N. m                                      |
| 运行力矩/(AT —PPS)<br>RUNNING TORQUE(AT —PPS) | ——以上/MIN<br>(——V. DC, ——A/相(PHASE), ——相励磁/EX) |
| 绝缘耐压/DIELECTRIC STRENGTH                  | 500V A. C 1分钟/MINUTE                          |
| 绝缘电阻/INSULATION RESISTANCE                | 100MΩ 以上/MIN.                                 |
| 绝缘等级/INSULATION CLASS                     | CLASS B                                       |
| 温度上升/TEMPERATURE RISE                     | 80K MAX.                                      |
| 转子惯量/ROTOR INERTIA                        | 82g. cm²                                      |
| 重 量/WEIGHT                                | 约/APPROX. 400克/g                              |
| 允许轴向负载/ALLOWABLE THRUST LOAD              | 3N  |
| 允许径向负载/ALLOWABLE RADIAL LOAD              | 20N(轴端/ON THE SHAFT END)                      |
| 运行环境温度/OPERATION AMBIENT TEMP.            | -20℃——+50℃                                    |
| 运行环境湿度/OPERATION AMBIENT HUM.             | 15%——90%                                      |
| 寿 命/LIFE                                  | 5000小时/HOURS                                  |

1. 额定电流：两相同时通电/AT RATED CURRENT, TWO PHASES ON.  
2. 热阻法：电机安装在84\*84\*15的铝板上，电机线圈两端通额定电压，OPPS /MEASURED BY RESISTANCE METHOD. MOUNT WITH ALUMINUM HEAT SINK 84\*84\*15 AT TWO WINDING BE EXCITED BY RATED VOLTAGE,OPPS,2PHASE ON.  
3. 寿命测试条件：整步，运行速度为500PPS，轴承的表面温度不超过70° C  
LIFE TEST CONDITION:2PHASE EXCITING, FULL STEP, AT 500PPS. STARTING PULSE, BEARING TEMPERATURE SHOULD BE 70° C MAX.

| 1000线光电编码器出线定义 |     |     |    |     |     |    |    |    |    |
|----------------|-----|-----|----|-----|-----|----|----|----|----|
| 序号             | 1   | 2   | 3  | 4   | 5   | 6  | 7  | 8  | 9  |
| 定义             | EA+ | EA- | NC | EB+ | EB- | NC | NC | 5V | GN |
| 线色             | 棕   | 白   | \  | 绿   | 黄   | \  | \  | 红  | 蓝  |

|   |          |                                   |               |                 |                      |          |         |            |                                  |  |
|---|----------|-----------------------------------|---------------|-----------------|----------------------|----------|---------|------------|----------------------------------|--|
| CONFIRMED&ACCEPTED BY CUSTOMER<br>(客户确认&接受) |          |                                   |               |                 |                      |          |         |            |                                  |  |
|   |          | COMPANY CHOP&SIGNATURE<br>(盖章&签名) |               |                 |                      |          |         |            |                                  |  |
|   |          |                                   |               |                 |                      |          |         |            |                                  |  |
|   |          |                                   |               |                 |                      |          |         |            |                                  |  |
| 一般公差<br>TOLERANCE                           | ±0.3/±3° | 版本<br>REV.                        | 年 月 日<br>DATE | 变更番号<br>ECR NO. | 变 更 内 容<br>REVISIONS | 设计<br>BY | 备注 NOTE | REV.       | A                                |  |
| 设计/DESIGNED                                 |          | 比例<br>SCALE                       |               |                 | 型 号/MODEL            |          |         |            | 三维图<br>THIRD ANGL<br>PROJECTION  |  |
| 审核/CHECKED                                  |          | 单位<br>UNIT                        |               | mm              |                      |          |         |            | 第三角<br>THIRD ANGLE<br>PROJECTION |  |
|   |          |                                   |               |                 |                      |          |         | 页<br>SHEET | 1/1                              |  |