

A

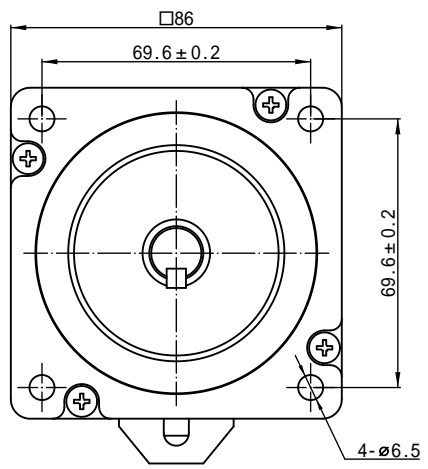
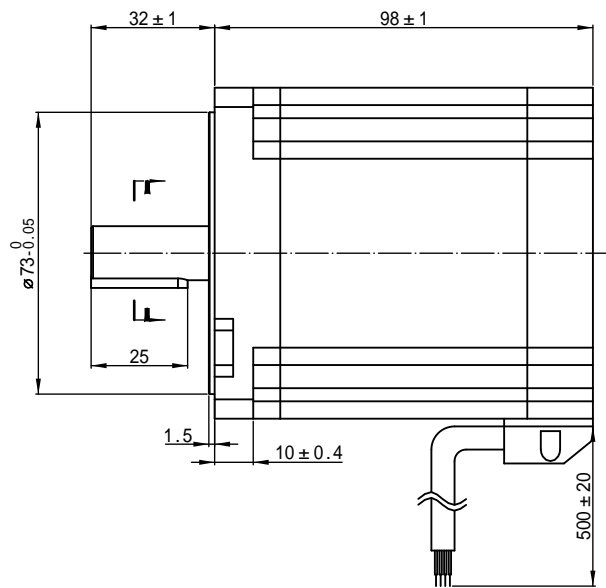
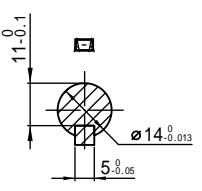
B

C

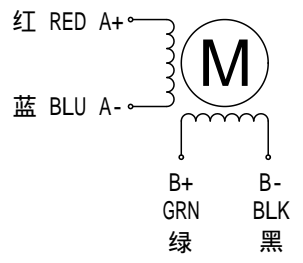
D

E

F



接线图:Wiring Diagram



励磁顺序vs.旋转方向  
Exciting Sequence vs. Direction of Rotation

STEP	A+	B+	A-	B-	
1	+	+	-	-	CCW ↑
2	-	+	+	-	
3	-	-	+	+	
4	+	-	-	+	

↓ CW

从安装面看为顺时针方向  
Clockwise view from mouting side

标签 Label Detail



规格 Specifications

1.相数 Number of Phase	2
2.步距角 Step Angle	1.8°
3.额定电压 Rated Voltage	3.6V
4.额定电流 Rated Current	6.0 A
5.保持力矩 Holding Torque	6.5N.m Typ. ( Two phase on/rated current )
6.相电阻 Phase Resistance	0.60ohm±10% ( 20°C )
7.相电感 Phase Resistance	4.2 mH±20% ( 1kHz 1V rms )
8.转子惯量 Rotor Inertia	2.8kg.cm <sup>2</sup>
9.电机重量 Motor Weight	3.1KG
10.绝缘等级 Insulation Class	B ( 130°C )

			单位:毫米 Unit:mm	批准 Approve		 Hybrid Stepping Motor ShenZhen Rtelligent Technology Co.LTD 深圳锐特机电技术有限公司				
			第一视角画法 First angle method	标准化 Standard						
			未注线性与角度尺寸公差均按 GB/T 1804-M	工艺 Technology	CHEN 2024/07/01					
			未注形状与位置尺寸公差均按 GB/T 1184-K	审核 Check	ZHANG 2024/07/01					
	原始版本 Original revision			设计 Design	WANG YI 2024/07/01	型号: 86AM65-14 V3.0				
REV.	版本记录 REVISION RECORD	DATE	UNLESS OTHERWISE SPECIFIED	NAMES	SIGNATURE	DATE	TYPE:	Rev.A	SCALE 1:1	Sheet 1 of 1